

# DecoFlex WireFree™ Surface 5 Channel Instructions

Item #: 1871025 (White)

## Product Overview

The DecoFlex WireFree Surface keypad provides homeowners with a simple and elegant way to control their Somfy-powered RTS shades. With a surface-mount capability and IP54 rating, it is ideal for interior and exterior applications.

## Control Operation

### Status LEDs

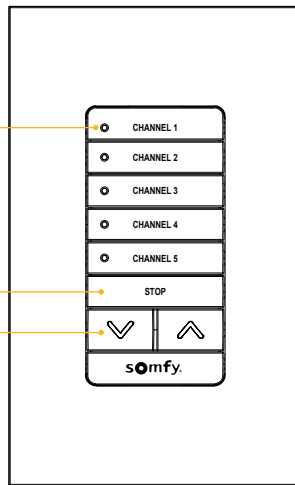
Press to select the channel(s) that you intend to control.

### STOP

When the shades are moving, press to stop them at the desired level. When shades are stationary, press once to bring the shades to the favorite position.

### Raise/Lower

Press to raise/lower shades to desired levels.



## What's In the Box

- DecoFlex WireFree™ Surface 5 Channel
- Instructions
- CR2430 battery (x1)
- Keypad assembly
- Mounting frame
- Mounting screws (x2)
- Screw anchors (x2)

## Important Notes

**Codes:** Install in accordance with all local and National Electrical Codes.

**Environment:** Ambient operating temperature: 4° F to 131° F (-20° C to 55° C), 0 to 90% humidity, non-condensing, IP54 rating.

**Mounting:** For optimal performance, DO NOT mount the control to a metal surface.

**Battery:** DO NOT use rechargeable batteries. Using improper batteries could damage the DecoFlex Surface keypad.

**Cleaning:** To clean, wipe with a clean damp cloth. Do not use any chemical cleaning solutions.

**Purpose of control:** Electronic, Operating Control

**Installation method:** Independently mounted, for surface-mount or wall-box mount

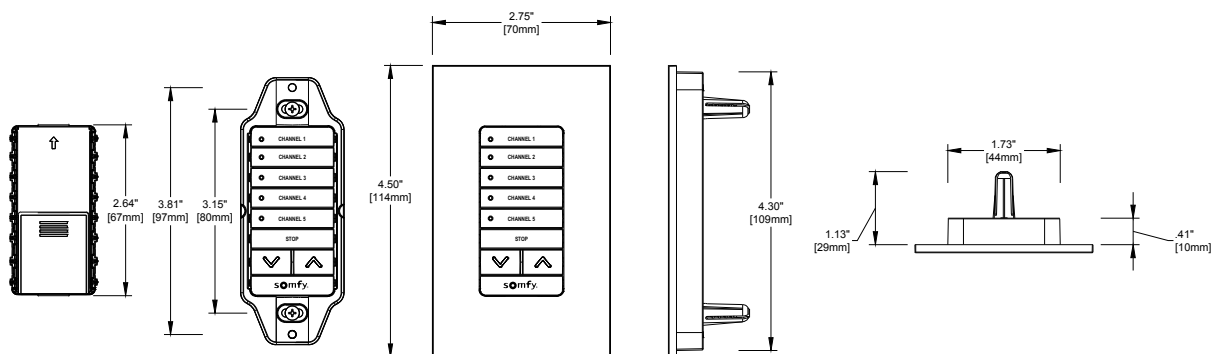
**Type of Action:** 1

**Pollution Degree:** 4 overall, 2 micro-environment

**Regarding Battery:**

“CAUTION - RISK OF EXPLOSION IF BATTERY IS REPLACED BY AN INCORRECT TYPE. DISPOSE OF USED BATTERIES ACCORDING TO THE INSTRUCTIONS”

## Dimensions



Somfy Flush-Mount Faceplate  
(Faceplate included)

## Installation

The keypad can be surface-mounted with the following steps:

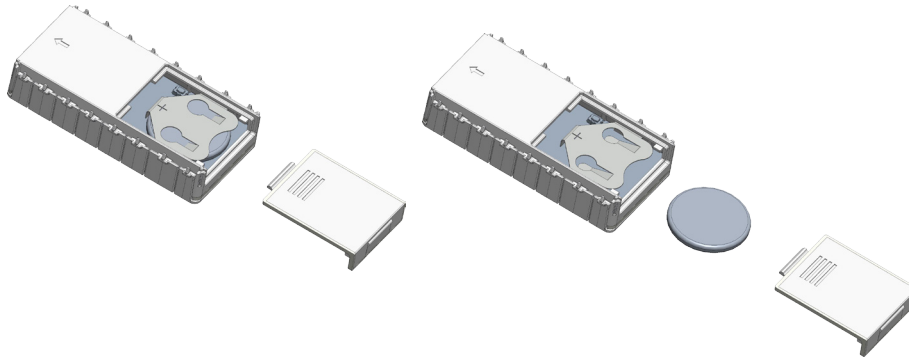
1. Drill two 3/16" holes using the mounting frame as a guide.
2. Install the frame using the anchors and screws provided.
3. Push the keypad module until you hear a click.
4. Attach the Somfy wall plate on to the keypad.



## Battery Replacement

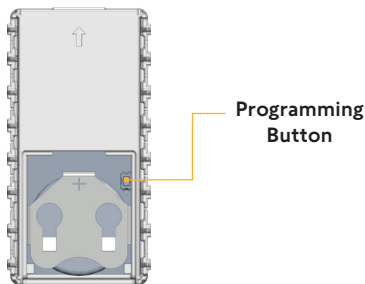
**WARNING:** Burn hazard. To avoid the risk of fire, explosion, or burns, DO NOT recharge, disassemble, crush, puncture, or incinerate the battery. Please recycle battery appropriately.

1. Remove the Somfy wall plate to access the keypad module.
2. Slide the battery door off and remove the battery from the holder.
3. Remove the existing battery and replace with a new CR 2430 battery, positive (+) side up. Slide the battery door back into the keypad module and reinstall it with the wall plate.



## Programming

For detailed steps on programming, please refer to the pocket programming guide at [www.somfypro.com/pocket-programming-guide](http://www.somfypro.com/pocket-programming-guide)



## FCC/IC Information

This device complies with part 15 of the FCC Rules and Industry Canada license-exempt RSS standard(s). Operation is subject to the following two conditions:

- (1) This device may not cause interference, and
- (2) this device must accept any interference, including interference that may cause undesired operation.

New Jersey  
121 Herrod Blvd.  
Dayton, NJ 08810  
T: (609) 395-1300  
F: (609) 395-1776

Somfy Systems, Inc.  
T: (800) 22-SOMFY  
[www.somfypro.com](http://www.somfypro.com)  
Florida  
1200 SW 35th Ave.  
Boynton Beach, FL 33426  
T: (561) 995-0335  
F: (561) 995-7502

California  
15301 Barranca Pkwy.  
Irvine, CA 92618-2201  
T: (949) 727-3510  
F: (949) 727-3775

Somfy ULC  
T: (800) 66-SOMFY  
[www.somfypro.ca](http://www.somfypro.ca)  
Canada  
6411 Edwards Blvd.  
Mississauga, ON L5T 2P7  
T: (905) 564-6446  
F: (905) 238-1491

